



C-202 2:1 Ratio Cumulator

Product Bulletin

Code No. LIT-7171405
Part No. 24-4666-9, Rev. B
Issued February 2016

Refer to the [QuickLIT website](#) for the most up-to-date version of this document.

The C-202 Cumulator is a reverse acting device with a ratio of 2:1. A reverse acting cumulator decreases output pressure with increasing pilot pressure.

The C-202 is used singly or in groups to accumulate the effect of two or more controllers operating a device.

Air connections are made with barbed fittings for 5/32 or 1/4 in. polytubing. These fittings are field supplied for the reverse acting model. The supply, output, and pilot air connections are marked **S**, **O**, and **P** respectively.

The C-202 varies its output pressure in proportion to pilot air changes at a 2:1 ratio; the output changes 2 psi (14 kPa) for each psi change in pilot air pressure. The output of the reverse acting model is adjustable from 20 to 12 psig (140 to 84 kPa) for 0 psig input (see Figure 3).



Figure 1: C-202 2:1 Ratio Cumulator

Features

- provides output pressure at a 2:1 ratio to pilot air pressure
- comes in reverse acting models
- can be used singly or in groups

Dimensions

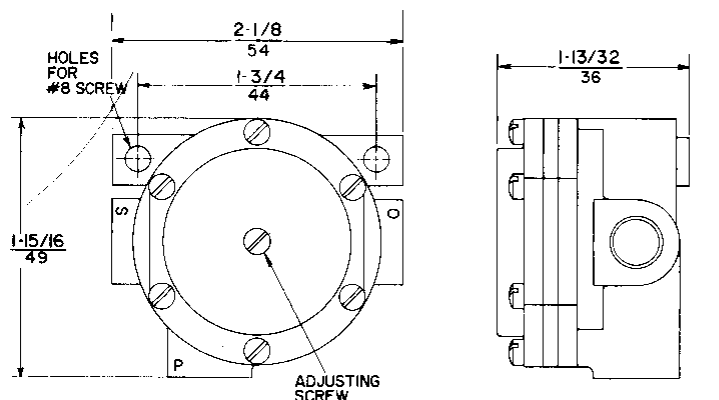


Figure 2: Dimensions, in. (mm)

Mounting

The C-202 is designed for installation in the control air piping. A supporting bracket is furnished for panel mounting if required.

Pressure Ratings

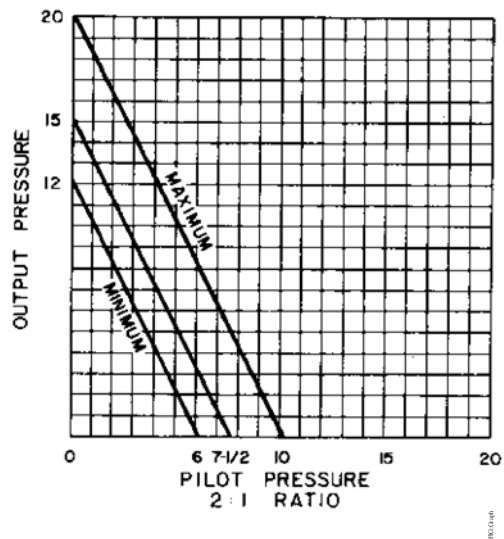


Figure 3: Pilot Versus Output Pressure

Repair Information

If the C-202 2:1 Ratio Cumulator fails to operate within its specifications, replace the unit. For a replacement sensor, contact the nearest Johnson Controls® representative.

Technical Specifications

C-202 2:1 Ratio Cumulator

Code Number		C-202-2
Ratio		2:1
Air Connections		1/8 in. FPT (Fittings Field Supplied)
Supply Pressure		20 to 25 psig (140 to 175 kPa)
Ambient Temperature		-20 to 130°F (-29 to 54°C)
Air Consumption		5 scim (1.4 ml/s)
Output Capacity		1,000 scim (273 ml/s)
Starting Point		Adjustable 20 to 12 psig (140 to 84 kPa)
Mounting		In-Line
Material	Body	Aluminum
	Plates	Brass
	Diaphragm	Dalron

The performance specifications are nominal and conform to acceptable industry standard. For application at conditions beyond these specifications, consult the local Johnson Controls office. Johnson Controls, Inc. shall not be liable for damages resulting from misapplication or misuse of its products.

European Single Point of Contact:

JOHNSON CONTROLS
WESTENDHOF 3
45143 ESSEN
GERMANY

NA/SA Single Point of Contact:

JOHNSON CONTROLS
507 E MICHIGAN ST
MILWAUKEE WI 53202
USA

APAC Single Point of Contact:

JOHNSON CONTROLS
C/O CONTROLS PRODUCT
MANAGEMENT
NO. 22 BLOCK D NEW DISTRICT
WUXI JIANGSU PROVINCE 214142
CHINA



Building Efficiency

507 E. Michigan Street, Milwaukee, WI 53202

*Metasys® and Johnson Controls® are registered trademarks of Johnson Controls, Inc.
All other marks herein are the marks of their respective owners. © 2016 Johnson Controls, Inc.*